

Euromod - RJ12



Standards, Approvals & Directives

2011/65/EC - RoHS Directive

Description

The RJ12 connector is a 6 pin connector with a 6P6C standard, using 3 pairs

It can also be wired as a RJ11, 6P2C standard using a single pair or 6P4C standard using 2 pair

Features

- Clip-In module for quick and easy installation.
- Black or white modules available
- Labelled IDC terminals

Availability

All Euromod outlets are available for all our collections of wiring accessory plates and can be specified to contain single or multiple outlets depending upon requirement.

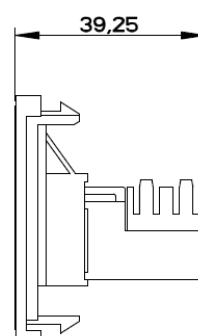
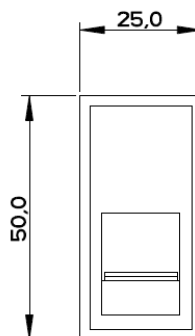
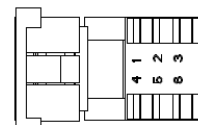
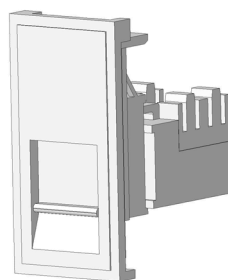
The Classic Collection takes advantage of plate mounting the clip-in Euromods, eliminating the use of a grid. Modules are supplied separately.

The Infinity Collection plates and grids are supplied together whereas the modules are supplied separately.

The Penthouse Collection supplies the Euromods, plates and grids individually.

Finishes

The RJ12 module is supplied in either Black or White polycarbonate, complementing the chosen plate finish.



Installation

Carefully strip 25mm of the cable outer sheath to expose the inner conductors

Using a suitable IDC tool, punch each wire down as per wiring scheme. Trim the wire ends

Pin No	Pair	Cable Colour			
1	3	WHITE/green			
2	2	WHITE/orange			
3	1	BLUE/white	6p2c	6p4c	6p6c
4	1	WHITE/blue			
5	2	ORANGE/white			
6	3	GREEN/white			

Recommended Box Depth:

47 mm

Metal boxes to BS4662.

Ordering

Interior Euro Module: 3606003 - White

3606004 - Black

Please see Wandsworth Electrical catalogue for more information and suitable grid and plate

Tel: +44(0)1483 713 400

Email: sales@wandsworthgroup.com