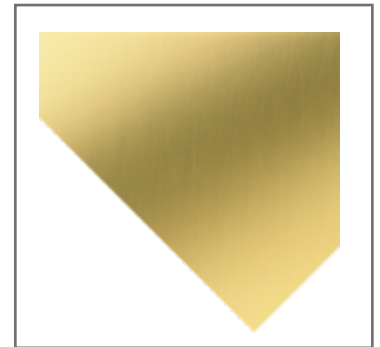
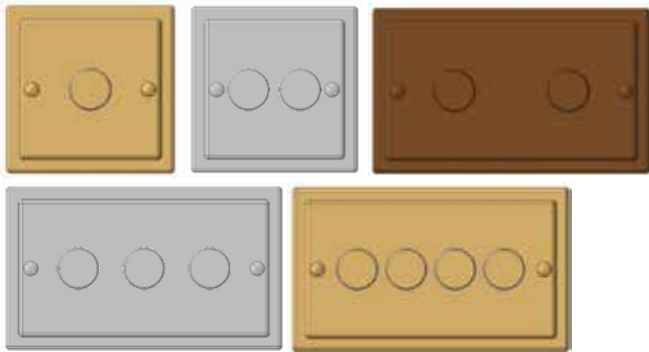


Collection	Finish	Product
Victorian	Polished Brass	1-4 Gang Dimmers

Victorian Collection 1-4 Gang Dimmers



Specified in Polished Brass

Description

Rotary dimmers, suitable for use with both LED and incandescent lighting. Push on/push off switch with rotary control dimming. They have two-way switching that may be used with a normal two-way switch elsewhere. Please note the additional two-way switch will have on/off function only and will not dim from the second location.

Standards, Approvals & Directives

Comply with:
 BS-EN 60669-2-1
 EN-55015
 CE Marked

Features

- Push On/Push Off, rotary dimming control
- All products clearly printed with BS No's, ratings, etc
- Complementary control knobs are supplied with the cover plates
- Available in all Heritage Collection finishes
- 1 - 4 Gang available

Finishes

All finishes are individually inspected by the Wandsworth Group, a sign of the high standard we have set for the Heritage Collection.

Ordering

When ordering please state in tabular form your requirements for plates/finishes, interior modules and boxes. Note: Separate grids are not required.

E.g. P2335/ASI , 3 x RAD , 1703/G

Where /ASI = plate/knob finish in Antique silver

Larger/multi-gang dimmers are available to special order and quotation. See sheet 2 for catalogue numbers.

Modules order separately:

Unit	Description	Rating
RTD120	Dimmer (LED) Trailing edge	120 watt max
RLD300	Dimmer (Incandescent) Leading edge	300 watt max
RAD	Dimmer 1-10V	
ROO	On/off module Switch only—not a dimmer Matches dimmer modules in appearance	

Collection	Finish	Product
Victorian	Polished Brass	1-4 Gang Dimmers

Technical Specifications

IP Rating—IP2XD

To suit metal back boxes to BS4662

For technical details of dimmer modules please see individual data sheets.

Catalogue Numbers

1 gang—Plate

P2331/*, Flush box—1702/g

2 gang (single size)

Plate—P2334/*, Flush box—1702/g

2 gang (twin size)

Plate—P2332/*, Flush box—1703/g

3 gang

Plate—P2335/*, Flush box—1703/g

4 gang

Plate—P2336/*, Flush box—1703/g

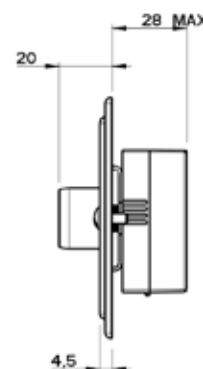
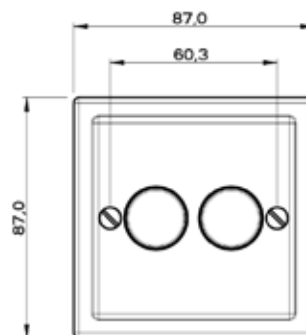
2 Gang Dimmer - Single

Recommended Box Depth:

35 mm

Metal Boxes to BS4662

Note: 1 Gang plate size is the same



3 Gang Dimmer - Twin

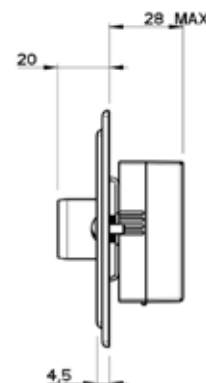
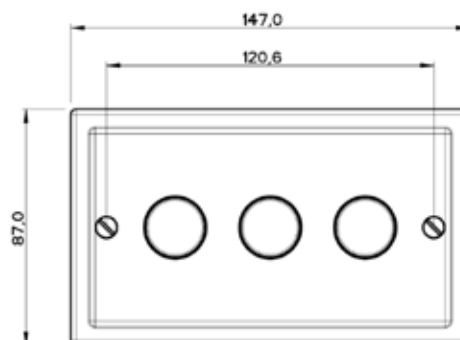
Recommended Box Depth:

35 mm

Metal Boxes to BS4662

Note: 4 Gang plate size is the same.

Larger 2 gang plate also available in this size



NOTE:

The Company Policy is one of continuous improvement and the right to change designs, dimensions, descriptive matter, etc., at any time without notice is reserved.